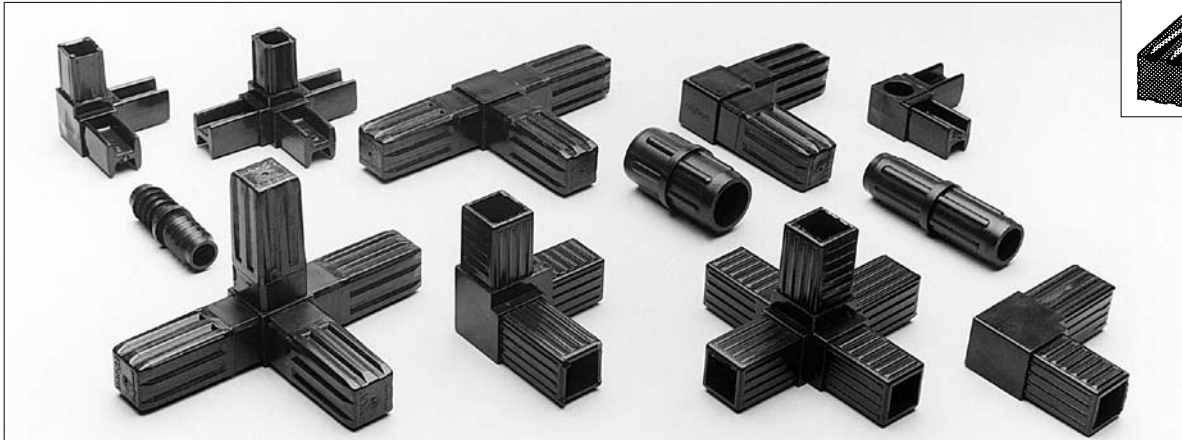
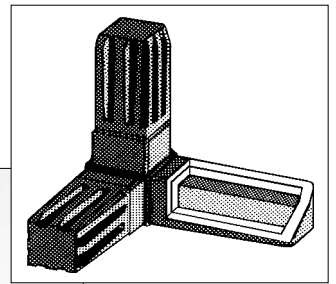


Tube Connectors & Square Steel Tube



Light Duty — Type A

Two-Way	Three-Way	Three-Way Flat	Four-Way	Four-Way Flat	Five-Way	Six-Way
Reference	Reference	Reference	Reference	Reference	Reference	Reference
205	201	206	202	207	203	204

LIGHT DUTY — TYPE A
Light duty range manufactured in ABS plastic. Suitable for 20mm x 20mm (1.2) 18 swg tubing. Stock colour is black. Chrome plated finish available to special order.

Light Duty — Type B

Two-Way	Three-Way	Four-Way	Five-Way
Reference	Reference	Reference	Reference
215	211	212A	213

LIGHT DUTY — TYPE B
Light duty range manufactured in ABS plastic. Suitable for 25mm x 25mm (1.2) 18 swg tubing. Stock colour is black. Chrome plated finish available to special order.

Heavy Duty

Two-Way	Three-Way	Three-Way Flat	Four-Way	Four-Way Flat	Five-Way	Six-Way
Reference	Reference	Reference	Reference	Reference	Reference	Reference
2W	3W	3WF	4W	4WF	5W	6W

HEAVY DUTY
They have heavy duty metal centres with an outer covering of ABS plastic. Suitable for 25mm x 25mm (1.2) 18 swg tubing. Stock colour is black.

Square Steel Tubing for Heavy Duty Connectors

Size	Length	Colour	Reference
25mm x 25mm (1.2)	3m	Black	3MB
25mm x 25mm (1.2)	3m	White	3MW

SQUARE TUBE
Square tube for use with the heavy duty tube connectors. Available in painted black or white.

Straight

Tube Dia.	Tube Gauge	Length	Colour	Reference
3/4"	(16-18)	55mm	Black	D8863
7/8"	(20)	78mm	Black	D12410
1"	(18)	78mm	Black	D06840
1.1/4"	(20)	57mm	Black	D10660

STRAIGHT TUBE CONNECTORS

Light duty range, suitable for connecting round tubes end to end.

