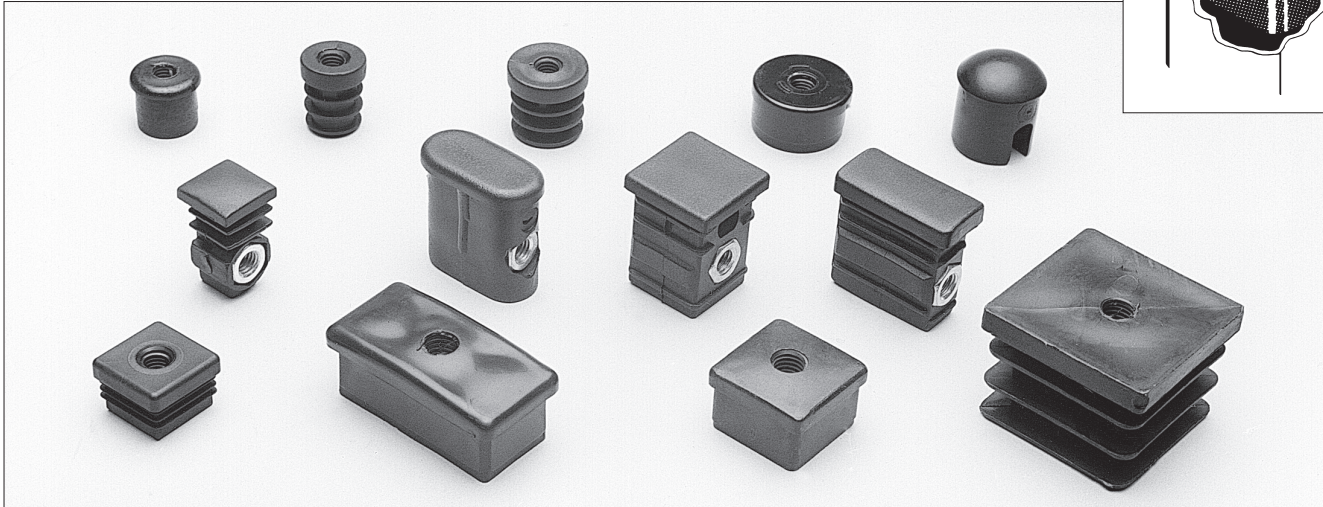
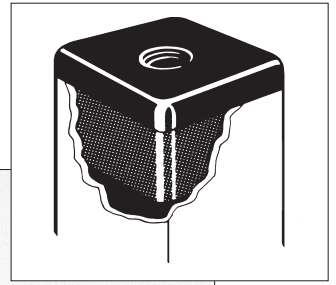


Round, Square & Rectangular Moulded Threaded Inserts



Square

Tube Size	Tube Gauge	Thread	Reference
3/4" x 3/4"	(18)	M.8	39768
7/8" x 7/8"	(18)	M.8	S0668
1" x 1"	(16-18)	M.8	K1954T/2
1.1/4" x 1.1/4"	(16)	M.8	5854-1
1.1/4" x 1.1/4"	(18)	M.8	5853-1
1.1/4" x 1.1/4"	(16)	M.10	5856-1
1.1/4" x 1.1/4"	(18)	M.10	5855-1
1.1/2" x 1.1/2"	(16)	M.10	5866-1
1.1/2" x 1.1/2"	(18)	M.10	5865-1
1.1/2" x 1.1/2"	(12)	M.12	5870-1
16mm x 16mm	(1.0-2.0)	M.8	39900
20mm x 20mm	(1.0-2.0)	M.8	39901
22mm x 22mm	(1.0-2.0)	M.8	39902
25mm x 25mm	(1.0-2.0)	M.8	39903
25mm x 25mm	(1.0-2.0)	M.10	39904
30mm x 30mm	(1.0-2.0)	M.8	39905
30mm x 30mm	(1.0-2.0)	M.10	39906
40mm x 40mm	(1.0-2.0)	M.8	39907
40mm x 40mm	(1.0-2.0)	M.10	5950-2
50mm x 50mm	(1.0-2.0)	M.8	39008
50mm x 50mm	(1.0-2.0)	M.10	8000-1

Side Entry

Tube Size	Tube Gauge	Thread	Length	Reference
1.1/8" Rnd	(16)	M.8	32mm	0596
1" x 1"	(16-18)	M.8	37mm	0848
1.1/2" x 3/4"	(16)	M.8	37mm	6N146J
2" x 1"	(16-18)	M.8	35mm	0917

Round

Tube Size	Tube Gauge	Thread	Reference
18mm	(1.0-2.0)	M.8	39761
20mm	(1.0-2.0)	M.8	39762
22mm	(1.0-2.0)	M.8	39800
25mm	(1.0-2.0)	M.8	39763
25mm	(1.0-2.0)	M.10	39764
28mm	(1.0-2.0)	M.8	39801
28mm	(1.0-2.0)	M.10	39802
30mm	(1.0-2.0)	M.8	39803
30mm	(1.0-2.0)	M.10	39804
32mm	(1.0-2.0)	M.8	39765
32mm	(1.0-2.0)	M.10	39766

Rectangular

Tube Size	Tube Gauge	Thread	Reference
20mm x 30mm	(1.0-2.0)	M.8	39009
20mm x 40mm	(1.0-2.0)	M.8	39010
20mm x 50mm	(1.0-2.0)	M.8	39011
25mm x 50mm	(1.0-2.0)	M.8	39774
25mm x 50mm	(1.0-2.0)	M.10	39012
60mm x 30mm	(2.0)	M.10	S0845
60mm x 30mm	(2.5)	M.10	S0796
1.1/2" x 3/4"	(16)	M.10	5860-1

THREADED INSERTS

See Page 16 for an additional range of heavy duty inserts.