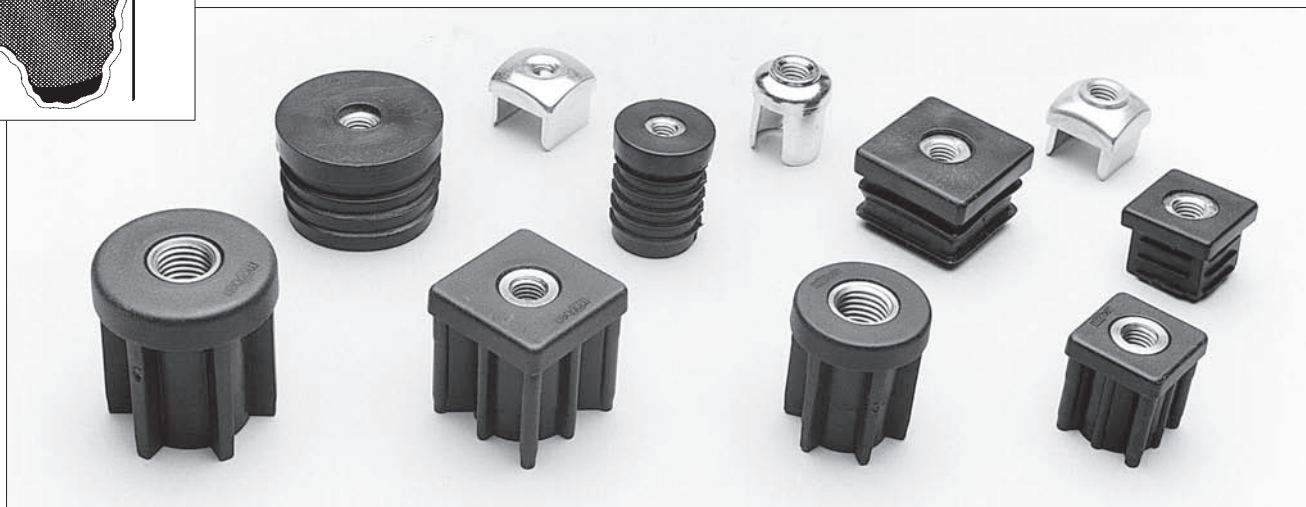


# Metal Threaded Inserts



## Heavy Duty

Tube Size	Tube Gauge	Thread	Reference
30mm x 30mm	(1.5)	M.10	224-68182
30mm x 30mm	(1.5)	M.12	224-63932
30mm x 30mm	(1.5)	M.16	224-63952
40mm x 40mm	(1.5)	M.10	224-64323
40mm x 40mm	(1.5)	M.12	224-63882
40mm x 40mm	(1.5)	M.16	224-63902
40mm x 40mm	(2.0)	M.16	224-66533
40mm x 40mm	(1.5)	M.20	224-63922
50mm x 50mm	(2.5)	M.16	224-63051
50mm x 50mm	(1.5)	M.20	224-68883
50mm x 50mm	(2.5)	M.20	224-63001

1.3/16" Dia. (30mm)	(1.0)	M.10	180-61606
1.3/16" Dia. (30mm)	(1.0)	M.12	180-63766
1.1/2" Dia. (38mm)	(1.5)	M.10	180-68572
1.1/2" Dia. (38mm)	(1.5)	M.16	180-63061
1.3/4" Dia. (42.4mm)	(1.5)	M.16	180-63071
1.3/4" Dia. (42.4mm)	(1.5)	M.20	180-52691
1.7/8" Dia. (48.3mm)	(1.5)	M.16	180-63081
1.7/8" Dia. (48.3mm)	(1.5)	M.20	180-58631

### HEAVY DUTY

Range of heavy duty plastic inserts. Fitted with non-corrosive metal threads. Ideal for use with our Conveyor Feet as detailed on Page 18.

## Metal

Tube Size	Tube Gauge	Thread	Finish	Reference
1" x 1"	(16)	M.8	Zinc Plated	3074T
1" x 1"	(18)	M.8	Zinc Plated	3072T
1"	(16)	M.10	Zinc Plated	3028ABM10
1"	(18)	M.10	Zinc Plated	3026ABM10
1" x 1"	(16)	M.10	Zinc Plated	3074ABM10
1" x 1"	(18)	M.10	Zinc Plated	3072ABM10

### METAL

All metal range of steel tube ends.

## Extra Long

Tube Size	Tube Gauge	Thread	Length	Reference
25mm	(1.5)	M.8	35mm	461361
25mm	(1.5)	M.10	35mm	461362
32mm	(2.0)	M.8	35mm	461368
32mm	(2.0)	M.10	35mm	461371
25mm x 25mm	(1.5)	M.8	35mm	461352
25mm x 25mm	(1.5)	M.10	35mm	461354
30mm x 30mm	(1.5)	M.8	35mm	461353
30mm x 30mm	(1.5)	M.10	35mm	461355
40mm x 40mm	(1.5)	M.10	37mm	461356

### EXTRA LONG

Range of heavy duty plastic inserts. Fitted with zinc plated metal threads. Suitable for use with castors or heavy duty feet. Additional sizes available to special order.