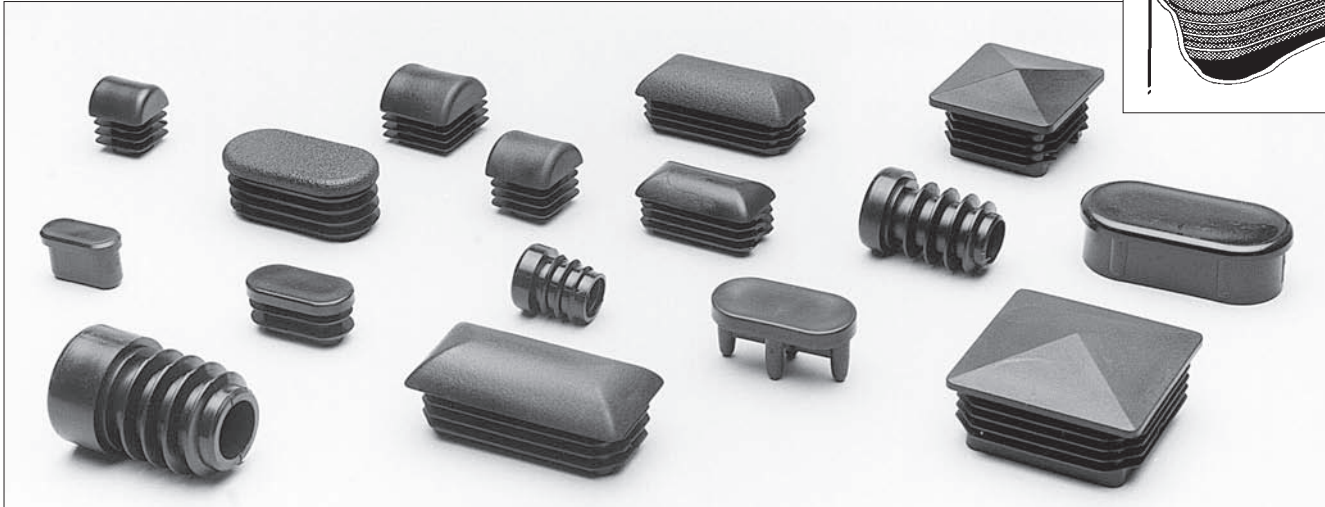
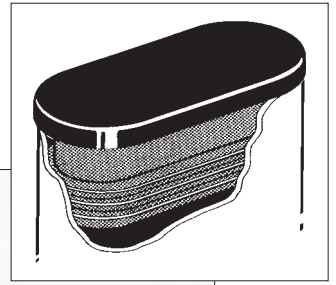


# Domed & Oval Tube Inserts



## Oval

Tube Size	Tube Gauge	Colour	Reference
1 1/4" x 5/8"	(14-20)	Black	A3538GA
25mm x 12mm	(1.5)	Black	A2593TA
30mm x 15mm	(1.5-2.0)	Black	A4040TA
40mm x 20mm	(1.6)	Black	A4545TA
*50mm x 25mm	(1.0-1.5)	Black	A5050TA
60mm x 30mm	(2.0)	Black	A6060TA

\* TEXTURED HEAD FINISH

## Heavy Duty

Tube Size	Tube Gauge	Head Thickness	Colour	Reference
3/4"	(14-18)	1/4"	Black	A12992A
7/8"	(14-18)	1/4"	Black	A12993A
1"	(14-16)	5/16"	Black	A12642A
1 1/8"	(14-16)	5/16"	Black	A12643A
1 1/4"	(14-18)	5/8"	Black	A12644A

## Half Moon

Tube Size	Tube Gauge	Colour	Reference
* 3/4" x 3/4"	(14-20)	Black	A14482A
* 7/8" x 7/8"	(14-20)	Black	A14483B
* 1" x 1"	(10-14)	Black	A144881
* 1" x 1"	(14-20)	Black	A14484C

\* TEXTURED HEAD FINISH

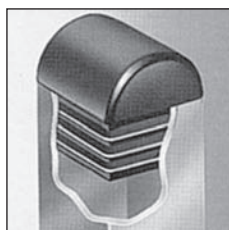
## Domed

Tube Size	Tube Gauge	Colour	Reference
1 1/2" x 3/4"	(14-20)	Black	A14485D
* 2" x 1"	(10-14)	Black	A14489J
* 2" x 1"	(14-20)	Black	A14486E
* 60mm x 30mm	(1.0-2.0)	Black	A14487F

\* TEXTURED HEAD FINISH

## Square Pyramid

Tube Size	Tube Gauge	Colour	Reference
40mm x 40mm	(2.0-3.0)	Black	A14488G
2" x 2"	(10-14)	Black	A14492K
2" x 2"	(14-20)	Black	A14490H



### PLASTIC TUBE ENDS

Additional sizes of inserts are continually being added to our range. So if you don't see what you need, give us a ring and we may be able to supply.