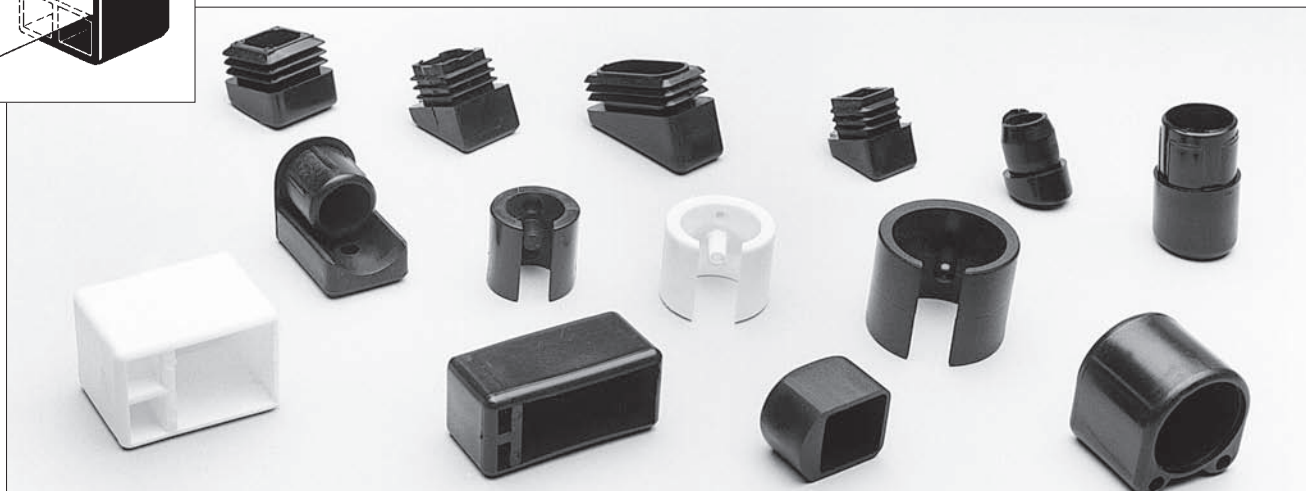


# Angled Feet, Stand Off Feet & Saddle Feet



## Angled Feet



Tube Size	Tube Gauge	Head Angle	Colour	Reference
3/4"	(16)	15°	Black	A0446KA
25mm	(1.2-1.5)	8°	Black	A1102
5/8" x 5/8"	(14-20)	45°	Black	A0172
3/4" x 3/4"	(16-18)	25°	Black	A35615A
7/8" x 7/8"	(16-18)	25°	Black	A16145A
1" x 1"	(16-20)	15°	Black	A14632A
40mm x 20mm	(1.0-1.5)	20°	Black	3168

### ANGLED FEET

Ideal for use on stacking chairs, play equipment and step ladders.

## Stand Off Feet

Tube Size	Colour	Reference
28mm (1.1 1/8")	Black	9328/A
3/4" x 3/4"	Black	3434
1" x 1"	Black	E11S0F
1" x 1"	White	18380/2
1.1/2" x 3/4"	Black	25940
40mm x 20mm	Black	4020
2" x 1"	Black	04810

### STAND OFF FEET

For additional sizes, see the round Bulbous Ferrules on page 9.

## Saddle Feet

Tube Dia.	Peg Size	Colour	Reference
3/4"	1/4"	Black	A26142XA/B/1
3/4"	1/4"	White	A26142XA/B/2
7/8" and 1"	1/4"	Black	A08552A/B/1
7/8" and 1"	1/4"	White	A08552A/B/2
1.1/4"	1/4"	Black	9N218Z/1
1.1/4"	1/4"	White	9N218Z/2

### SADDLE FEET

Suitable for raising tubing off floor surfaces.

